

ELMD2 Antibody (C-term)
Affinity Purified Rabbit Polyclonal Antibody (Pab)
Catalog # AP11988b**Specification**

ELMD2 Antibody (C-term) - Product Information

Application	FC, WB,E
Primary Accession	Q8IZ81
Other Accession	NP_714913.1
Reactivity	Human
Host	Rabbit
Clonality	Polyclonal
Isotype	Rabbit IgG
Calculated MW	34961
Antigen Region	251-279

ELMD2 Antibody (C-term) - Additional Information**Gene ID** 255520**Other Names**

ELMO domain-containing protein 2, ELMOD2

Target/Specificity

This ELMD2 antibody is generated from rabbits immunized with a KLH conjugated synthetic peptide between 251-279 amino acids from the C-terminal region of human ELMD2.

Dilution

FC~~1:10~50

WB~~1:1000

E~~Use at an assay dependent concentration.

Format

Purified polyclonal antibody supplied in PBS with 0.09% (W/V) sodium azide. This antibody is purified through a protein A column, followed by peptide affinity purification.

Storage

Maintain refrigerated at 2-8°C for up to 2 weeks. For long term storage store at -20°C in small aliquots to prevent freeze-thaw cycles.

Precautions

ELMD2 Antibody (C-term) is for research use only and not for use in diagnostic or therapeutic procedures.

ELMD2 Antibody (C-term) - Protein Information**Name** ELMOD2

Function Acts as a GTPase-activating protein (GAP) toward guanine nucleotide exchange factors like ARL2, ARL3, ARF1 and ARF6, but not for GTPases outside the Arf family. Regulates IFN-related antiviral responses.

Tissue Location

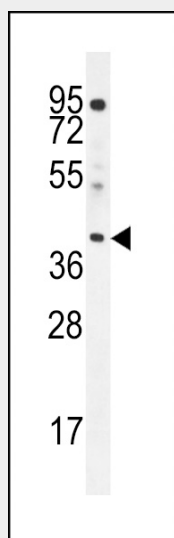
Alveolar cells (morphologically type II cells) and alveolar macrophages (at protein level). Expressed in brain, colon, heart, kidney, liver, lung, muscle, placenta, small intestine, spleen, stomach and testis. In lung it is expressed in alveolar macrophages and alveolar walls.

ELMD2 Antibody (C-term) - Protocols

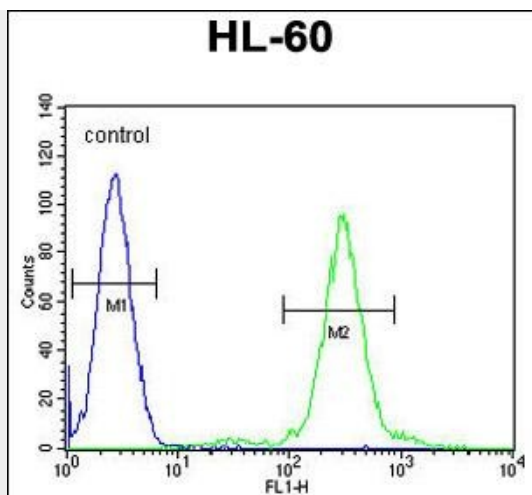
Provided below are standard protocols that you may find useful for product applications.

- [Western Blot](#)
- [Blocking Peptides](#)
- [Dot Blot](#)
- [Immunohistochemistry](#)
- [Immunofluorescence](#)
- [Immunoprecipitation](#)
- [Flow Cytometry](#)
- [Cell Culture](#)

ELMD2 Antibody (C-term) - Images



ELMD2 Antibody (C-term) (Cat. #AP11988b) western blot analysis in HL-60 cell line lysates (35ug/lane). This demonstrates the ELMD2 antibody detected the ELMD2 protein (arrow).



ELMD2 Antibody (C-term) (Cat. #AP11988b) flow cytometric analysis of HL-60 cells (right histogram) compared to a negative control cell (left histogram). FITC-conjugated goat-anti-rabbit secondary antibodies were used for the analysis.

ELMD2 Antibody (C-term) - Background

This gene encodes one of six engulfment and motility (ELMO) domain-containing proteins. This gene is thought to play a role in antiviral responses. Mutations in this gene may be involved in the cause of familial idiopathic pulmonary fibrosis. [provided by RefSeq].

ELMD2 Antibody (C-term) - References

Pulkkinen, V., et al. FASEB J. 24(4):1167-1177(2010)
Bowzard, J.B., et al. J. Biol. Chem. 282(24):17568-17580(2007)
Hodgson, U., et al. Am. J. Hum. Genet. 79(1):149-154(2006)